

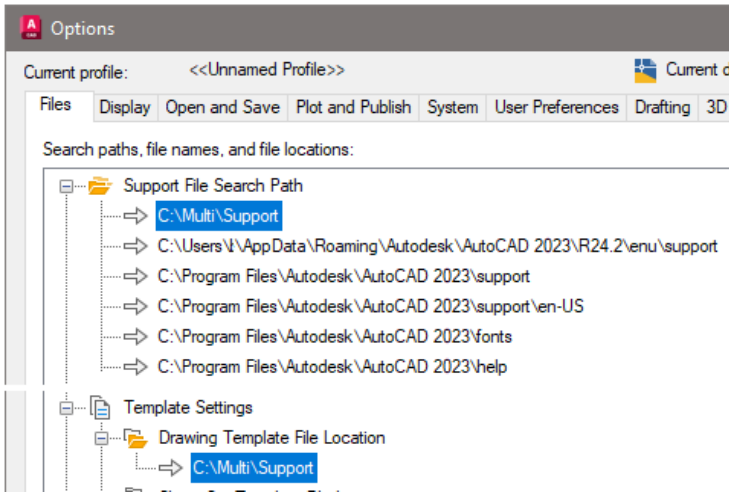
MultiSUITE Quick Start Guide

Download and run the www.multisuite.com/download/multisuite_setup.exe



Start your AutoCAD®, BricsCAD®, GstarCAD® or ZWCAD® in the normal way or use the MultiSUITE short-cut on your desktop.

If the MultiSUITE does not automatically load, then type OPTIONS and select the Files Tab. Press the Add button to add C:\Multi\Support to the top of Support File Search Path.

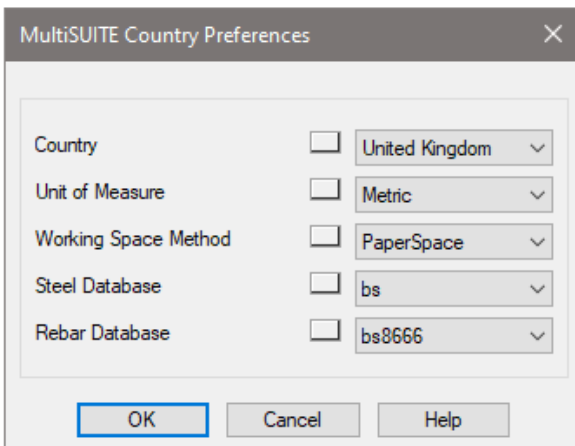


Use the Move Up button to move the C:\Multi\Support directory to the top of the search path list.

Next scroll down and change the Drawing Template File Location to be the C:\Multi\Support folder.

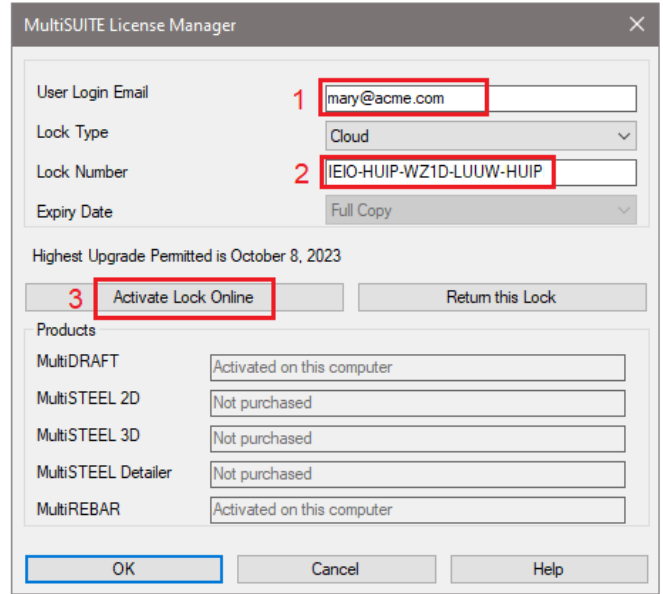
Exit AutoCAD and Restart for these changes to take effect. MultiSUITE will now automatically load.

Type MP and set the Country Preferences



Type MSERIAL at the command line. Add your Email Address and then paste in the Cloud Lock Number you have been sent.

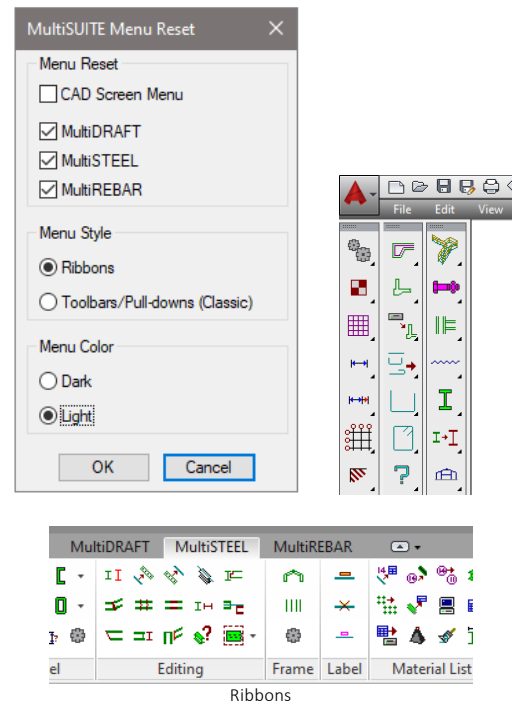
[Click here to request a Cloud Lock Number](#)



Press the [Activate Lock Online] button.

Your Internet browser will be displayed and confirm the products that have been Activated on this computer.

Type MMENU to display the MultiSUITE Ribbons and Toolbars



Installation Complete

Please contact us if you have any questions.

support@multisuite.com
www.multisuite.com