

# MultiSTEEL Integrator

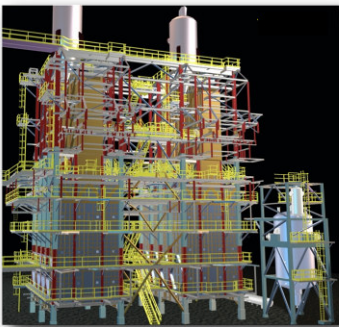
making the job easier



## How does it work ?

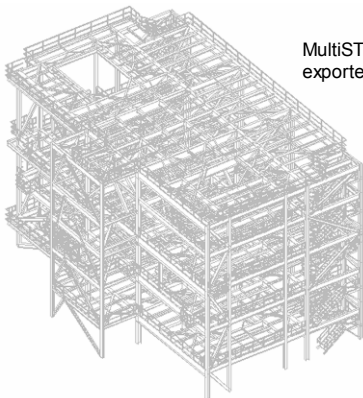
MultiSTEEL Integrator is a family of powerful translators that allows the exchange of structural steel model data via the MultiSTEEL 3D modelling environment.

MultiSTEEL Integrator encompasses exchange with 3D structural analysis and design models, fabrication systems, and process plant and piping systems, allowing companies to get real benefit from their valuable structural data.



(©Courtesy of ADJ Images)

Complex process engineering structure combining MultiSTEEL structural elements with AutoCAD based process plant and piping model



MultiSTEEL model exported to PDMS

MultiSTEEL Integrator brings together the wide range of data import and export tools for MultiSTEEL into a new single product.

## Application Areas

MultiSTEEL Integrator will be of major benefit to all users of the following software applications, and those who need to make use of data generated by these products in collaborative projects.

### Analysis and Design

STAAD.Pro, QSE, RAM, STRAP, MaterSeries, Robot, SuperSTRESS, GT STRUDL, SACS, SAP and others.

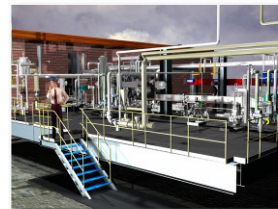
### Process Plant

PDMS, PDS, Frame Works, AutoPLANT, CADWorx, Plant-4D, CADPIPE and others.

### Fabrication

StruCad, Xsteel, Bocad, Fabtrol, Vernon and others.

Also supports International neutral file formats, SDNF, SXF, PXF. Full geometry and intelligent steel model transfer takes place in seconds.



All objects are compatible with industry standard rendering and clash detection systems such as Navisworks

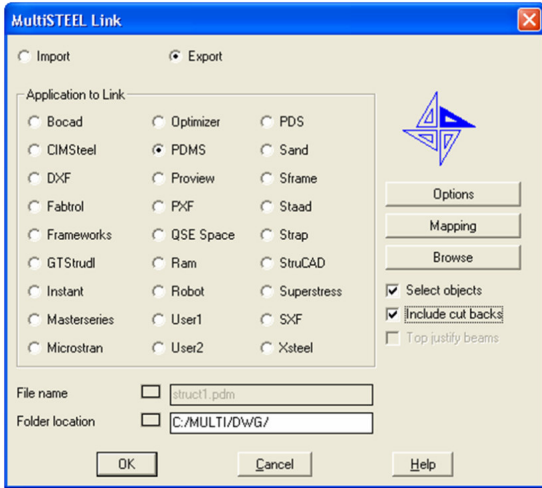
## Compatibility

MultiSTEEL Integrator can be used in all AutoCAD environments, including AutoCAD 2000 - 2006 Architectural Desktop, and AutoCAD Mechanical.

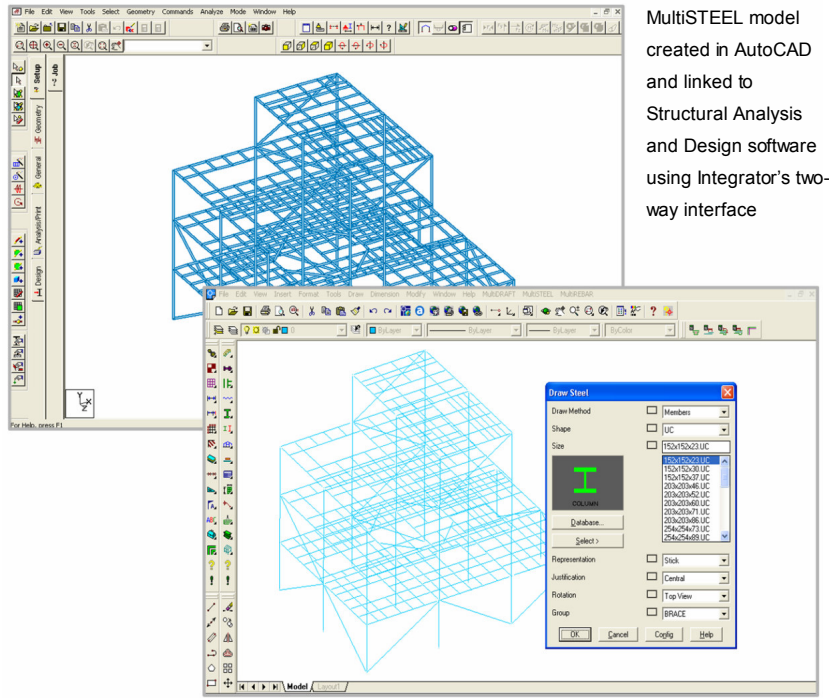
MultiSTEEL 3D is established as the leading steel modelling system for AutoCAD. In use on every continent, it combines powerful 3D capabilities with flexible and efficient 2D drawing production.

# MultiSTEEL Integrator

making the job easier

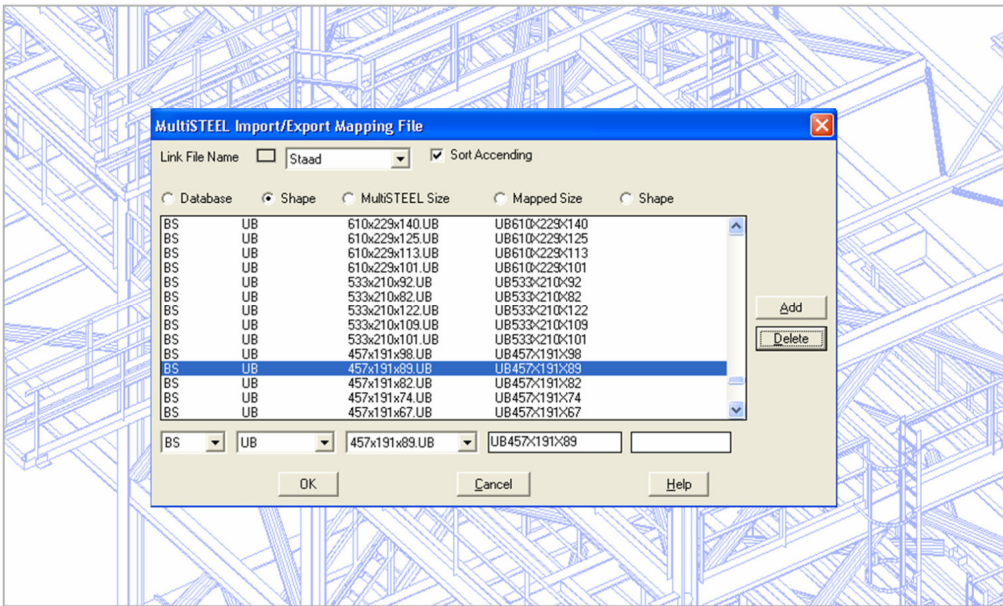


MultiSTEEL Integrator's Link dialog box showing the comprehensive range of supported formats



MultiSTEEL model created in AutoCAD and linked to Structural Analysis and Design software using Integrator's two-way interface

MultiSUITE Software's technology partners include the leading names in civil, structural, and process design software worldwide.



- Integrator gives the designer complete control over mapped sizes through the easy to use mapping steel file dialog box.
- British and International standards are supported.
- Special sections can be mapped to their equivalent MultiSTEEL section and vice versa.

## Mapping Concept

MultiSTEEL Integrator is underpinned by a powerful section mapping database. This technology allows linking between programs with different section naming conventions, and includes support for user defined sections.

Standard mapping files are supplied for international section libraries for all major file formats.

Users have full dialogue box driven control over the mapping files.

Our experienced support staff include leading experts in data exchange.

## On-going Development

MultiSTEEL Integrator facilitates the easy integration of leading software packages covering the entire design process into a single working environment.

MultiSTEEL Integrator will grow over time to encompass further file formats in response to our technology partners, and user demand.

MultiSUITE Software are committed to open standards and the free flow of structural information.

**Autodesk**  
Authorized Developer

All logos and product names are trademarks of their respective owners