

# MultiSTEEL 2D

## drawing steel into a new dimension

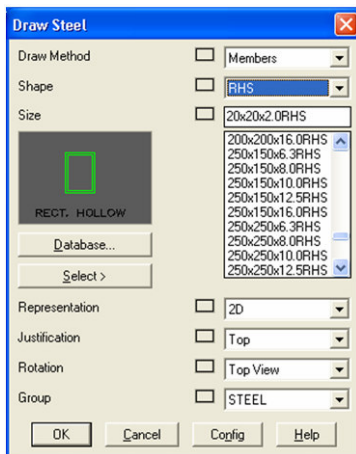
### The MultiSTEEL concept

MultiSTEEL is the most comprehensive steel drafting environment for AutoCAD users, and delivers the best possible accuracy and productivity in all areas of structural detailing.

With over fifteen years development and continuous enhancement, MultiSTEEL allows drawings to be created with a speed and fluency that is simply impossible to achieve with standard AutoCAD. Whether producing scheme drawings, working drawings, or as-built drawings, MultiSTEEL provides a totally flexible solution.

To improve general drafting efficiency, MultiDRAFT is supplied as an integral part of MultiSTEEL, and ensures that drawings are consistent in terms of layering, annotation style, and drawing presentation. MultiDRAFT is fully adaptable to your company's in-house drawing standards, and even includes automated scaling to simplify viewport control and prevent errors.

MultiSTEEL is simply the most complete application for steel drafting and the only one available for all AutoCAD platforms. Also available as a fully self contained CAD package powered by AutoCAD® OEM technology.



The draw steel dialog box

### Steel Profile Libraries

The Steel Profile Libraries are at the heart of MultiSTEEL and are the key to its accuracy and productivity. Steel profiles are selected from a comprehensive database to which the user may add additional sections if required. Immediate access to the database of over 5000 sections requirements to be displayed. Cladding and purlin profiles are also included.



A complete range of International Steel Libraries is provided.

### Feature Summary

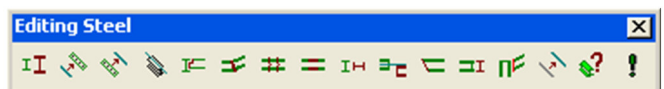
- Fast accurate GA and Detail Drawing production
- Easy editing to keep up with design changes
- Full section libraries, UK, European, North American and many others
- Extensive connections library
- Sections can be shown in 2D, 3D and Stick representation
- Cutting lists, materials summaries, steel weights
- Fully integrated with MultiDRAFT
- Full 3D visualisation of 2D drawings
- Unrivalled support and service



Photograph courtesy of David French & Piers

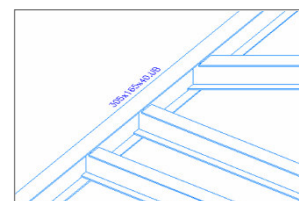
### Powerful Editing Commands

Being able to incorporate changes quickly and easily is an essential part of the design process and MultiSTEEL provides all the commands required to achieve this.



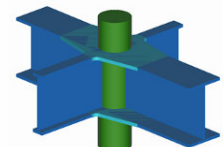
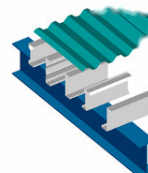
Steel properties can easily be changed including:

- Section type
- Size
- Rotation
- Justification
- Cutbacks
- End gaps
- Skew angles



Intelligent Notching/Cutbacks

Steel can be mitered, broken or merged. AutoCAD lines, polylines, and arcs can also be formed into intelligent steel objects. Steel can be shown as true 2D profiles, Stick lines, or 3D objects in the 2D plane of the drawing.



# MultiSTEEL 2D

drawing steel into a new dimension

## Scheduling Steel

MultiSTEEL can generate a comprehensive material list as the drawing is created. Automatic item numbers are allocated to each component and these provide a direct link to the drawing schedule.

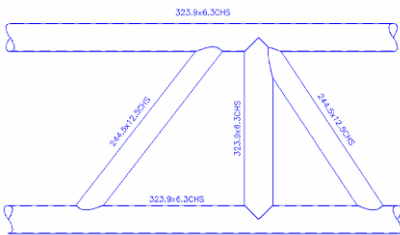
Total weights of steel, surface areas, cutting lists and steel summaries can then be displayed. A drawing created with MultiSTEEL becomes a working database, which can also be exported to other applications if required.

Item	Qty	Size	Grade	Length	Weight	S.Area
41		100x100x8L	43	124401	1517.6	49.76
15		150x150x23 LUC	43	66414	1504.4	58.15
17		150x150x30 LUC	43	84524	2335.7	78.07
4		150x75x18 C	43	3416	61.2	1.95
2		150x69x16 UB	43	5900	89	3.51
5		200x200x36 LUC	43	15231	746.6	13.27
63		250x146x31 UB	43	129510	4027.8	135.99
95		250x250x107 LUC	43	393735	42130.1	598.09
2		250x250x132 LUC	43	15943	2091.3	24.45
28		250x250x73 LUC	43	106361	7764.3	157.95
46		300x165x40 UB	43	197530	6348.5	193.29
549		Grand Total		2724560	316093.1	4669.89

A material summary can be displayed at any time

## Workshop Module

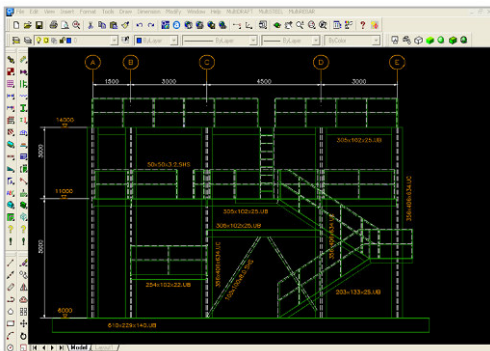
This module provides more specific detailing tools for the designer, including notching for a range of bolted and fully welded connections, together with stiffener, and gusset plate commands.



Advanced cutback facility for pipe/tube intersections

## Bolting and Welding

Specific detailing tools for bolted and welded construction are provided. Bolt groups are dynamically toggled into place with automatic centre and edge clearance considerations. A full range of weld symbols is provided.



Producing fully annotated drawings, MultiSTEEL is a complete solution for effortless steel drafting

## Connections

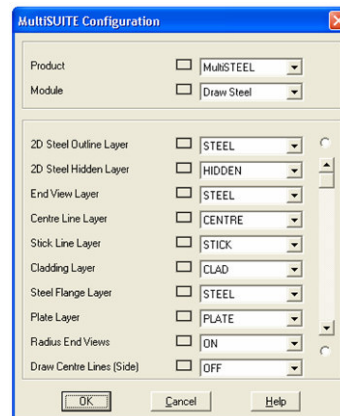
MultiSTEEL includes parametric connection detailing for Plate cleat, Angle cleat, and End Plate connections. Details can be built up from progressive dialogues, retrieved from a connection library, or from a General Arrangement drawing. This greatly reduces repetitive detailing of connections.



Although primarily a 2D system, the 3D representation of stairs, ladders and handrails is also possible

## Configuration

All modules can be configured to accommodate specific detailing preferences and layering



## AutoCAD Platforms Supported

MultiSTEEL versions are available for AutoCAD 2000, 2002, 2004, 2005, 2006 and Architectural Desktop.

MultiSTEEL CAD is also available as a fully self contained CAD package powered by AutoCAD® OEM technology.

Network versions available. Only MultiSTEEL 2D provides truly flexible licensing across all AutoCAD platforms.

**Autodesk**  
Authorized Developer

All logos and product names are trademarks of their respective owners